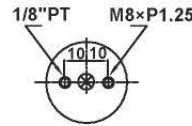


PERFECTION / INNOVATION / IMAGINATION

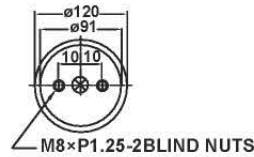
» Order NO :YS-2-105V / 1



TOP VIEW



BOTTOM VIEW



Static Data

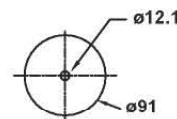
Load H mm	Inner Pressure kg/cm ²				
	2	3	4	5	6
min 110	137	196	259	322	382
120	133	181	240	273	344
140	94	120	151	190	230
max 160	24	33	42	50	62

max.Diameter : 123ø

» Order NO :YS-2-105V / 2



TOP VIEW



BOTTOM VIEW

•M50XP2.0
•M52XP2.0

Static Data

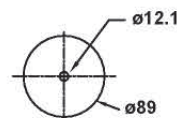
Load H mm	Inner Pressure kg/cm ²				
	2	3	4	5	6
min 130	137	196	259	322	382
140	133	181	240	273	344
160	94	120	151	190	230
max 180	24	33	42	50	62

max.Diameter : 123ø

» Order NO :YS-37S / 1



TOP VIEW



BOTTOM VIEW

•M50XP2.0
•M52XP2.0
•M43XP1.25

Static Data

Load H mm	Inner Pressure kg/cm ²				
	2	3	4	5	6
min 140	124	187	260	327	400
150	131	190	256	312	392
160	120	180	239	317	382
170	121	180	241	328	398
180	129	187	239	317	361
max 185	120	177	249	337	379

max.Diameter : 129ø

防震專業製造廠

怡馨橡膠工業有限公司
固安震企業有限公司
<http://www.ys-air.com.tw>

工業局工研院專案輔導廠商/國科會92年度輔導中企業技術升級廠商
總公司：彰化縣員林鎮員大路一段379號 T：(04)833-6557 F：(04)832-5588
E-mail：ysair@ms21.hinet.net • sammi@ys-air.com
台北分公司：台北市信義區松德路25巷23號 T：(02)272-79951 F：(02)272-74808
E-mail：taipei@ys-air.com • sammi@ys-air.com

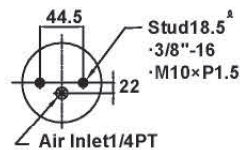
Air Springs For Commerical Vehicles

PERFECTION / INNOVATION / IMAGINATION

» Order NO :YS-D11232 / 1



TOP VIEW



BOTTOM VIEW



Static Data

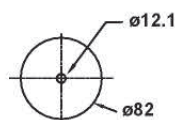
Load H mm	Inner Pressure kg/cm ²				
	2	3	4	5	6
min 120	149	212	292	376	472
140	135	192	287	363	466
160	135	217	294	374	461
180	128	194	288	367	464
200	123	200	295	377	480
max 210	132	217	314	406	484

max.Diameter : 129ø

» Order NO :YS-D11232 / 2



TOP VIEW



BOTTOM VIEW

- M50XP1.5
- M50XP2.0
- M52XP1.5
- M52XP2.0

Static Data

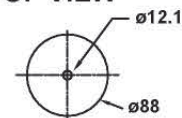
Load H mm	Inner Pressure kg/cm ²				
	2	3	4	5	6
min 138	149	212	292	376	472
158	135	192	287	363	466
178	135	217	294	374	461
198	128	194	288	367	464
218	123	200	295	377	480
max 228	132	217	314	406	500

max.Diameter : 129ø

» Order NO :YS-120VC



TOP VIEW



BOTTOM VIEW

- M50XP1.5
- M50XP2.0
- M52XP1.5
- M52XP2.0

Static Data

Load H mm	Inner Pressure kg/cm ²				
	2	3	4	5	6
min 138	211	246	350	403	467
148	184	241	297	369	425
168	94	145	186	235	281
max 178	47	85	126	162	200

max.Diameter : 123ø

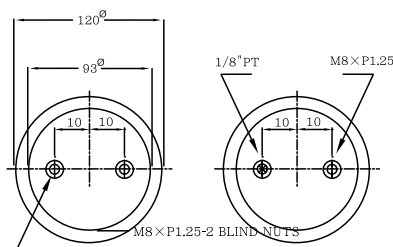


Air Springs For Commercial Vehicles

PERFECTION / INNOVATION / IMAGINATION

» Convoluted Air Springs

YS-2-122V



⊗ Air In 進氣孔 ⊙ Blindnut 内牙

Min Height: 2.8" (71mm)
 Max Height: 6.5" (165mm)
 Ride Height: 4.5"~5.5" (115~140mm)
 Max. Diameter: 5.3" (134mm)

» Convoluted Air Springs with thread M50-P1.5 or P2.0 , M52-P1.5 or P2.0

YS-2-125V



YS-3-125V



YS-2-147V



other side plate hole :12.1 \emptyset

» Clammed Air Springs with thread M50-P1.5 or P2.0 , M52-P1.5 or P2.0

YS-2-146VC

Max. Diameter: 6.3" (160 \emptyset mm)



YS-2-120VC

Max. Diameter: 5" (128 \emptyset mm)



other side plate hole :12.1 \emptyset

P3

PERFECTION
 INNOVATION / IMAGINATION

Air Springs For Commercial Vehicles

PERFECTION / INNOVATION / IMAGINATION

» Convoluted Air Springs

YS-2-125V

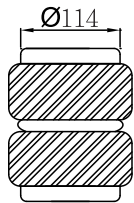


YS-3-125V



YS-2-125V Air Springs

YS-3-125V Air Springs



Min Height:2.80"(71mm)
Max Height:6.7"(170mm)
Ride Height:5"~6"(125~150mm)
Max.Diameter:5.4"(138mm)

Min Height:4.7"(120mm)
Max Height:8.8"(220mm)
Ride Height:5.5"~9.8"(140~195mm)
Max.Diameter:5.4"(138mm)

1號面板規格表 NO.1 Top Plate Specification

Specification	Air Inlet	Blindnut	Stud	View
A	7003-1	1/8"PT	M8*P1.25	
	7003-2	1/4"PT	M8*P1.25	
	7003-3	1/8"NPT	3/8"-16	
	7003-4	1/4"NPT	3/8"-16	
B	7004-1	1/8"PT	M8*P1.25	
	7004-2	1/4"PT	M8*P1.25	
	7004-3	3/8"PT	M8*P1.25	
	7004-4	1/8"NPT	3/8"-16	
	7004-5	1/4"NPT	3/8"-16	
	7004-6	3/8"NPT	3/8"-16	
C	7007-1	1/8"PT	M8*P1.25*20 ^l	
	7007-2	1/4"PT		
	7007-3	3/8"PT	3/8"-16*3/4 ^l	
	7007-4	1/8"NPT		
	7007-5	1/4"NPT		
	7007-6	3/8"NPT		
	7007-7	3/8"PT		
D	7001-1		M8*P1.25	
	7001-2		3/8"-16	
E	7002-1		M8*P1.25	
	7002-2		3/8"-16	
F	7006-1		M8*P1.25*20 ^l	
	7006-2		3/8"-16*3/4 ^l	

⊗ Air In 進氣孔 ⊙ Blindnut 內牙 ● Stud 外牙

