



固安震®

灌漿式彈簧防振基座

YS-E TYPE SPRING BASE

AIR VALVE AIR INSIDE
氣門閉 空氣密

Specification

| Models | Base Dimensions AxBxC(mm) | Pump Type / HP | |
|----------|------------------------------|----------------|----------|
| | | Coaxial | Coupling |
| YS-100E | 600x450 | 1/4-3 | |
| YS-160E | 900x450 | 5-10 | |
| YS-200E | 1200x450 | 15-20 | 1-5 |
| YS-300E | 1200x600 | | 7½-10 |
| YS-350E | 1200x700 | 25-30 | |
| YS-400E | 1350x700 | 40-60 | |
| YS-450E | 1500x600 | | 15-20 |
| YS-500E | 1500x900 | 75-100 | |
| YS-600E | 1800x750 | | 25-60 |
| YS-650E | 1800x900 | | |
| YS-700E | 1800x1000 | | |
| YS-800E | 1800x1200 | | |
| YS-900E | 2000x750 | | 75 |
| YS-1000E | 2200x700 | | |
| YS-1100E | 2400x750 | | 100-125 |
| YS-1200E | 2000x1000 | | |

⊙ The base dimensions shown above are for reference only. The actual pump size and site conditions must be taken into consideration when making selection.

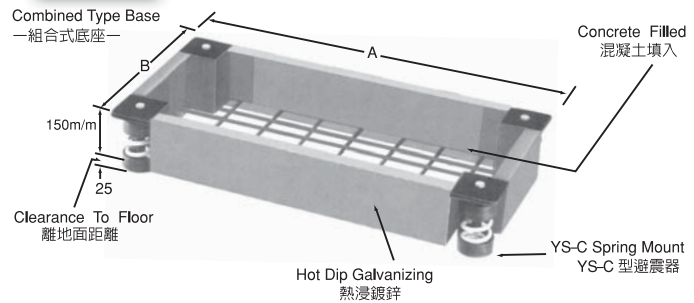
Features

- ⊙ The base is processed with hot-dip galvanization to improve rust resistance and provide a longer lifetime °
- ⊙ The YS-C spring material uses butyl rubber; Springs are baking-varnished °
- ⊙ Spring deflections are 25、40、50、75、100mm, which achieve a very low natural frequency, thus effectively isolating low frequency noise caused by pump vibration °
- ⊙ Base and springs are available in stainless steel (SUS304) °
- ⊙ Base dimension can be customized °
- ⊙ Applicable for co-axial、coupling、vertical、double suction、and extinguishing pumps °

Installation procedure

- 1 Prior to grouting, please place wooden planks or PE bags under the base to prevent contact and adhesion to the floor °
2. Remove the wooden planks or PE bags after cement is dry ° Before installing the pump and piping, place wood or iron blocks (approx. 25mm thick) below the base as support to suspend the base °
3. After piping has been completed, install the spring snubber (YS-C) ° Rotate with 7/8" bolt in anti-clockwise direction and the snubber base will rise, Adjust until the snubber supports the base completely °
4. Remove the wood or iron blocks to complete the installation °

Structure





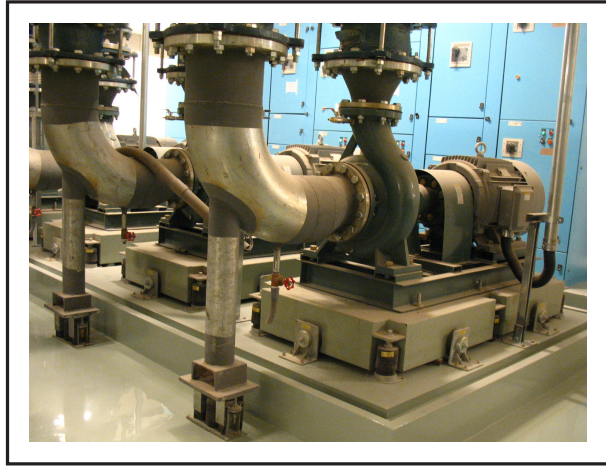
固安震®

灌漿式彈簧防振基座

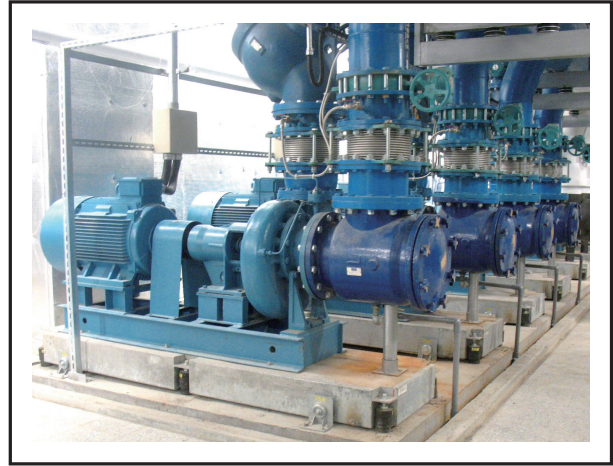
YS-E TYPE SPRING BASE

AIR VALVE AIR INSIDE
氣門阻 空氣室

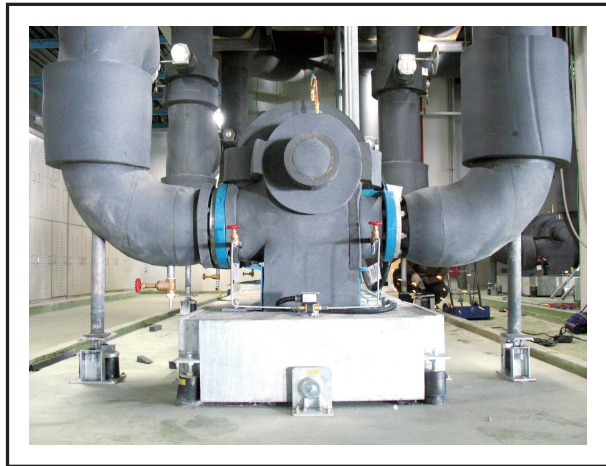
BRYL RUBBER
YS E TYPE



YS-E used in pumps



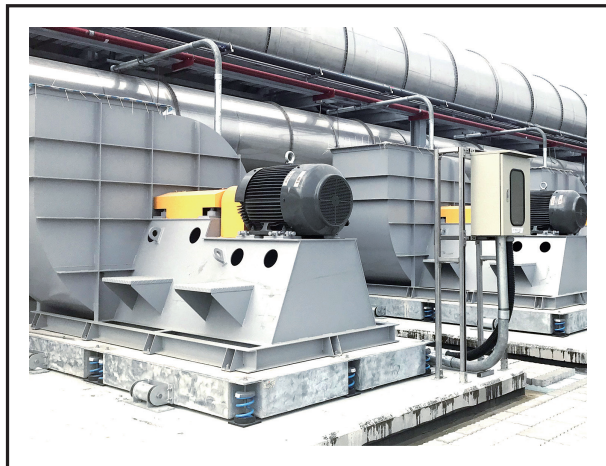
YS-E used in pumps



YS-E used in pumps



YS-E used in pumps



YS-E used in fans



YS-E & YS-EL used in pumps

Spring Base