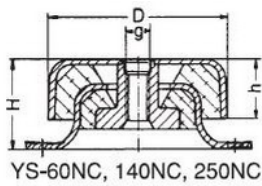
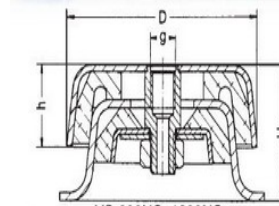
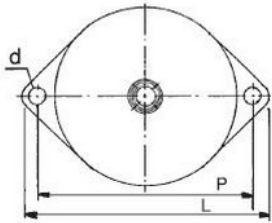


YS-NC TYPE RUBBER ISOLATOR

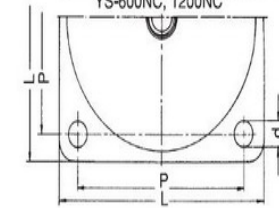
Structure



YS-60NC, 140NC, 250NC



YS-600NC, 1200NC



Specification Table

MODEL	LOAD RANGE (KGS)	L	P	D	d	g	H	h
YS-60NC	20-70	105	86	62	8.5	M10	28	15
YS-140NC	60-150	105	86	62	8.5	M10	28	15
YS-250NC	140-350	117	94	76	8.5	M12	38	25
YS-600NC	300-800	134	108	125	12	M14	65	33
YS-1200NC	700-1500	176	144	170	14	M16	90	60

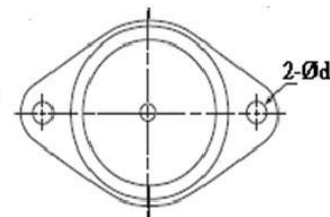
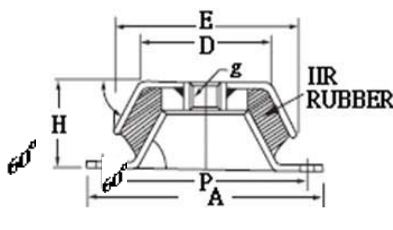
Features

- ⊙ Simple installation and excellent fixture.
- ⊙ Non-sulfur bonding provides great safety.
- ⊙ Adoption of CR rubber provides durability, ozone resistance and longer lifetime.
- ⊙ The isolator is assembled with three layers of iron plate and 2 layers of rubber. This provides elasticity in every aspect, which is particularly suitable for mechanical equipment that has actions of upward pulling, downward pressing or shear force, at the same time.
- ⊙ Also applicable for the isolation of vibration and impact inside of vehicles, ships and airplanes, as well as windmills, power generators.



YS-N TYPE RUBBER ISOLATOR

Structure



Specification Table

MODEL	LOAD RANGE (KGS)	A	P	D	E	H	d	g
YS-120N	40-130	119	99	50	72	35	12	M10
YS-220N	100-230	168	144	75	108	45	14	M12
YS-350N	200-380	197	167	100	138	55	14	M16
YS-700N	400-1000	197	167	100	138	55	14	M20
YS-1800N	1000-2500	197	167	100	138	55	14	M20

Features

- ⊙ Simple installation and excellent fixture.
- ⊙ The iron plate is galvanized for rust proofing and longer lifetime.
- ⊙ The bowl-shape iron cover can resist oil, solvent and sun light, which protects the rubber and duration of usage.
- ⊙ Suitable for mechanical equipment, e.g. motors, power generators and air-conditioners

